

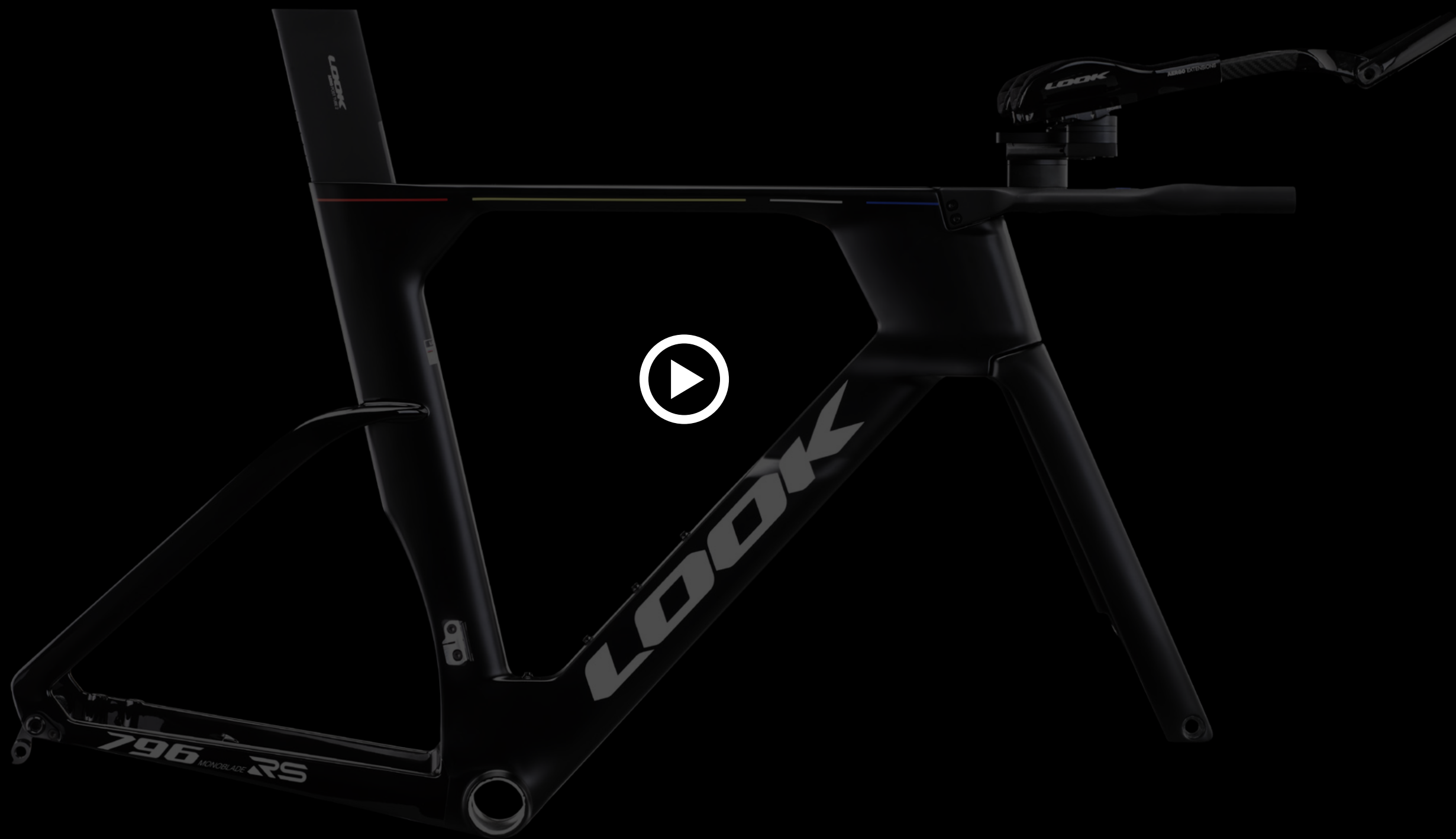
NEW



796 Monoblade^{RS}



796 Monoblade^{RS}

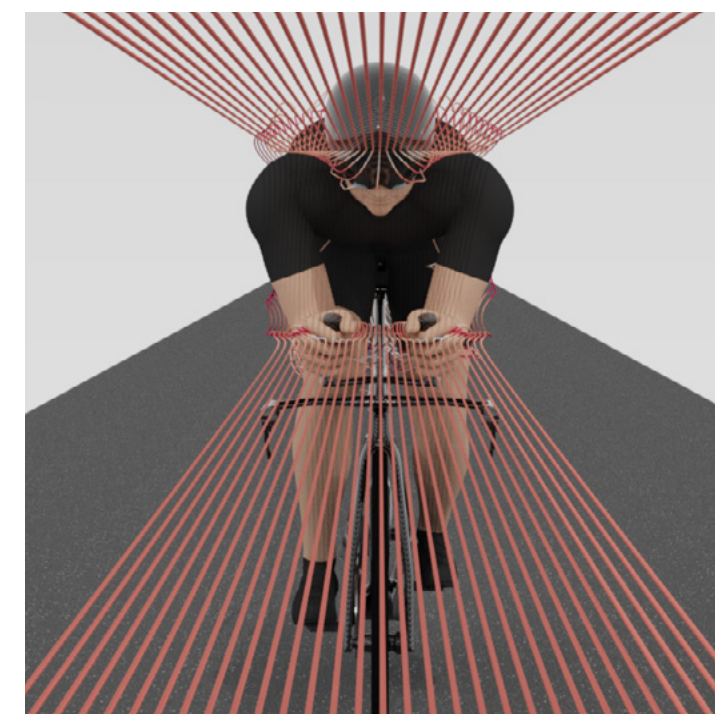
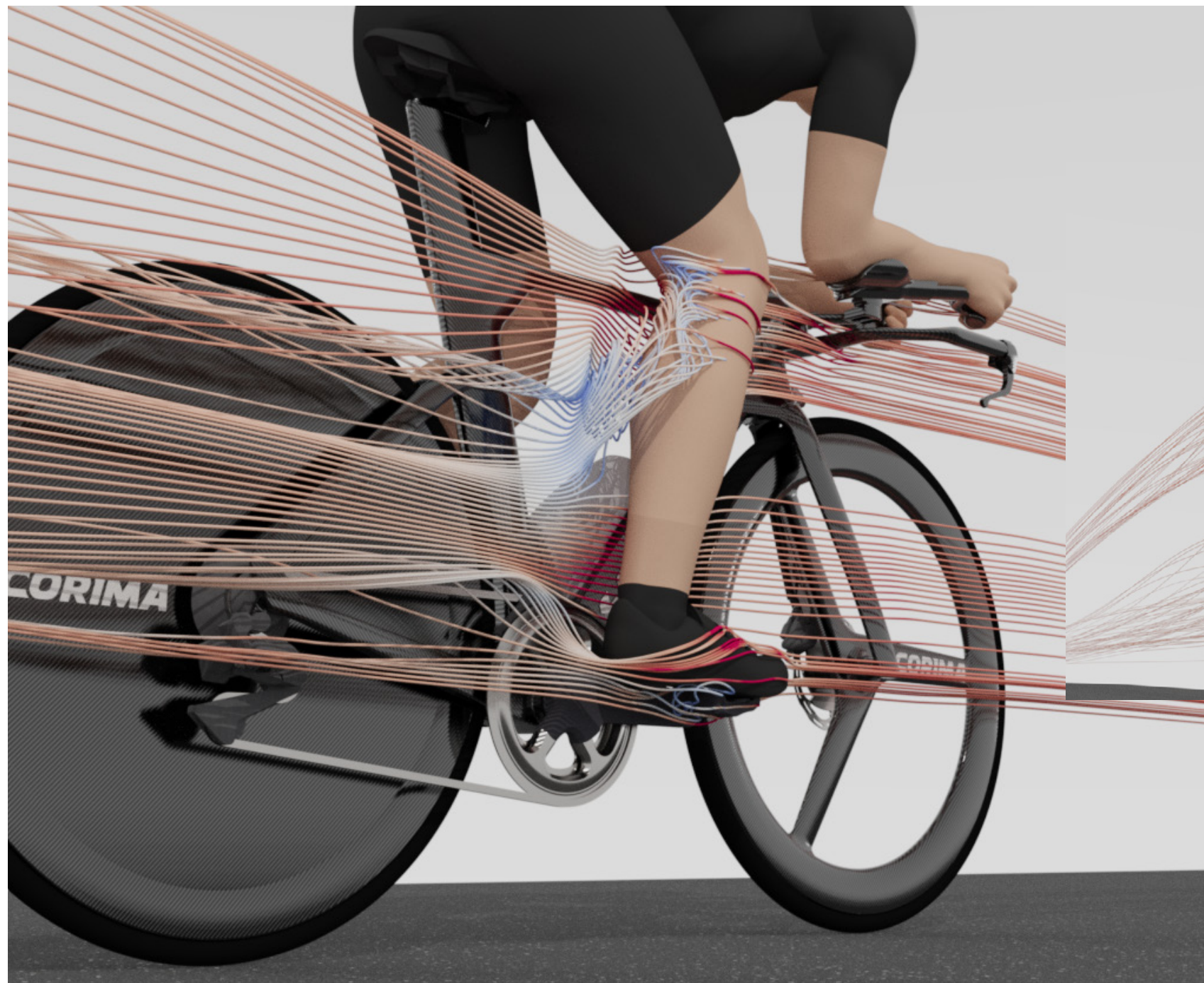


**A technological marvel
born to hunt elusive
seconds.**



The Time Conqueror

You provide the watts, we take care of the speed. This simple principle has guided us, in collaboration with the Cofidis team riders, to develop a time trial bike with nearly exponential performance: the faster you ride, the more efficient it is. In the battle against time, a watchmaker's precision is paramount. We have achieved aerodynamic excellence through cutting-edge digital modeling and rigorous wind tunnel and on-road tests, resulting in a lightweight, rigid design that seamlessly combines our track expertise, carbon mastery and unyielding commitment to performance. The outcome is an incredible racing machine, meticulously optimized from frame to cockpit, that slices through the air ; faster and faster.



Cutting-Edge Aerodynamics

The 796 Monoblade^{RS} was born to conquer time and as such, is crafted with the precision of a master watchmaker. Every tube, frame section and design detail is meticulously honed to enhance aerodynamics with zero compromise. Through state-of-the-art tools such as digital airflow modeling (CFD) and wind tunnel tests, we relentlessly refined multiple iterations until we achieved perfection: a machine that effortlessly tames road, wind, at speed. Once you hit the road, the 796 Monoblade^{RS} delivers superior dynamic performance and proves faster than its predecessor.



Light and Responsive

Incorporating the most complex carbon composition ever created by LOOK Cycle, the 796 Monoblade^{RS} offers an exceptional weight-to-stiffness ratio. Countless tests were conducted to select the best materials and design, optimizing every minute detail of the frame and components. The use of light, stiff Ultra High Modulus fibers combined with high-strength fibers in key areas (bottom bracket, head tube, seat tube) ensures a perfect balance between responsiveness, performance, and lightness. The result is a complete bike weighing less than 9 kg (size M), capable of breathtaking speed and powerful acceleration and control against the clock.

Perfect Position

The ergonomics of the 796 Monoblade^{RS} strike a balance between performance and tunable fit. The Aergo cockpit and reversible W3T seatpost offer a vast array of straightforward adjustment options, eliminating the need to substitute parts or disconnect cables. As an essential element of any time trial bike, the carbon cockpit combines a 400mm-wide basebar/stem combo with extensions that are adjustable in length, width, height, tilt and rotation, including elbow rests. This level of precision allows you to fine-tune and optimize your position down to the millimeter, achieving unparalleled comfort and performance without compromising on lightness, reliability or the extraordinary aerodynamics of the 796 Monoblade^{RS}.





Triathlon

Whether you're tackling a short-distance sprint or an Ironman, every effort requires a delicate balance of power and energy management; losing seconds to drag can't be afforded. The 796 Monoblade^{RS} is meticulously designed to deliver exceptional time trial performance while providing ideal ergonomics for long rides and diverse course profiles. The lightweight, adjustable and comfortable AERGO cockpit is complemented by strategically-placed bottle holders on the frame that enhance both aerodynamics and accessibility. Every detail is optimized, including inserts to mount an aero box on long-distance rides. Compatible with single or double chainring drivetrains, the 796 Monoblade^{RS} offers the precision and efficiency of a traditional racing bike combined with exceptional aerodynamic performance.

Bike / Road / TT
SKU 26329 (for M size)

796 Monoblade^{RS}

Frameset | Pro Team Black Satin / Glossy

NEW



Mounting

BB	T47 (85,5 mm)
Brakes	DISC Brake Flat mount
Seatpost	LOOK Aeropost Tube 2 with reversible head Sliding seatpost integrated clamp
Stem	Combo Aeroflat Bar 2 Base Bar /
H-Bar	Stem 1 piece Carbon Width 400mm Bridge New Aergo Carbon Extensions rotating positions

796 Monoblade^{RS}

- + Exceptional aerodynamics born from our close collaboration with World Tour Team Cofidis, to cut through the air and conquer the clock.
- + Top-of-its-class dynamic performance, thanks to an extraordinary weight-to-stiffness ratio.
- + Ultimate ergonomics with easily-adjustable components, allowing you to find the perfect position.
- + LOOK Cycle's expertise and mastery of carbon fiber technologies, optimizing every aspect of the design.



Contact

LOOK Cycle international
27 Rue du Docteur Léveillé - CS90013
58028 NEVERS CEDEX

Press Manager

International

lizzie.dunthorne@shiftactivemedia.com

France

asogny@lookcycle.fr

Italy

afumagalli@lookcycle.it

USA

mgann@lookcycle.fr